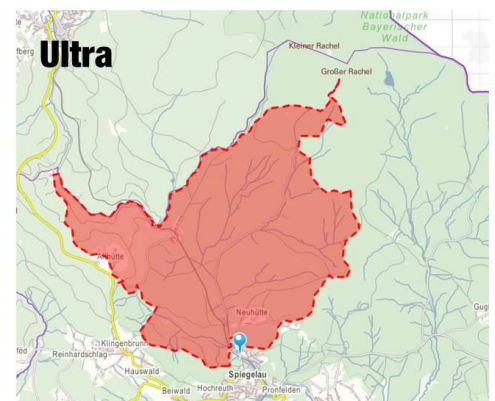
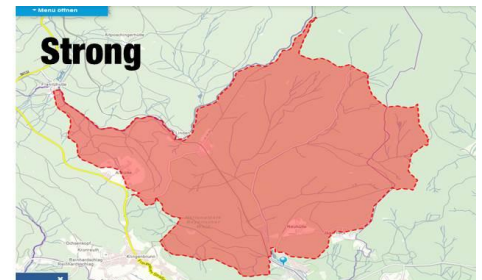
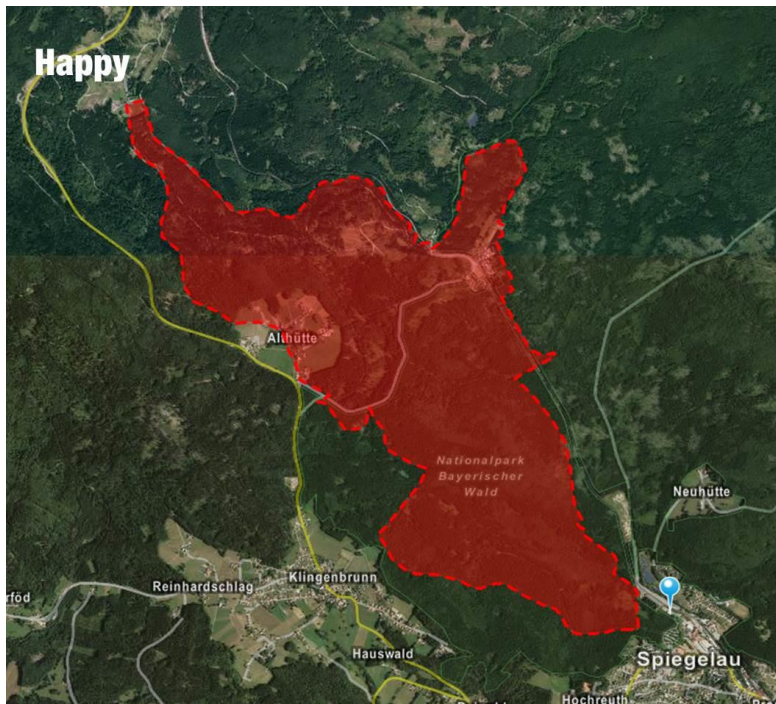
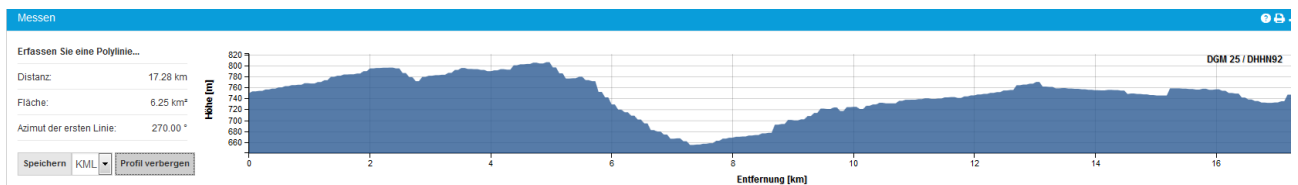


# Announcement Dogtrekking „Into the wild“

- Type:** Dogtrekking – Hiking Sports Event with your dog
- The Dogtrekking-Event takes place in the heart of the Bavarian National Park and offers depending on your condition three track layout
- Location:** D-94518 Spiegelau, Konrad Wilsdorf Straße, in front of the Igelbus-parking place
- Start:** Entrance of the Bavarian National Park, in front of the Igelbus-parking place
- Distance:**
- Happy: 17km (ca. 250 altitude difference)
  - Strong: 25km (ca. 450 altitude difference)
  - Ultra: 30km (ca. 750 altitude difference)
- Race profile:** The route runs on trails and paths. Depending on the choice of route, the ascents and descents covered vary from steep. In ‚Althütte‘ a road has to be crossed. On all routes are sufficient means of streams and water cooling options. For an average of trained participants the track ‚Happy‘ will be finished within 5 hours.
- The selected routes can be changed by the participants during the event.



height profile track „Happy“



**Start Time:** 10am  
**Start:** Mass start with time offset in blocks according to the choice of route  
**Closing Date:** 3<sup>rd</sup> of October 2016, Late registration until 7<sup>th</sup> of October possible

**Distribution of start numbers/**

**Late registration:** Fleischeslust Competence Center, Schwarzachstraße 25, 94518 Spiegelau  
Saturday: 2 pm – 6pm  
Sunday: 8 am – 10am

**Starting fee:** Euro 20,- Late registration: Euro 25,-  
Team: 50,-

**Classes:**

- Elite m/w: 17-39 years (DCM/DCW)
- Master m/w: from 40 years (DCMV/ DCWV)
- Team: mixed m/w with at least 3 participants and maximum 5 participants (the 3<sup>rd</sup> runner each team who reaches the goal will be rated)

**Time measuring:** by chip on the body of the hiker

**Conditions of the participation:**

- 1 dog per hiker
- The dog has to be at least 18 months old
- Every dog needs a valid vaccination
- Dogs must be on leash during the event
- Insurance documents, valid vaccination cards needs to be shown
- The dog must be kept on a suitable harness
- Harnesses can be borrowed for free against a deposit at the local service

**Liability:** The promoter accepts no liability

**Award ceremony:** On Saturday, 8<sup>th</sup> of October at 6 pm at the Fleischeslust ‚Dogtoberfest‘  
Fleischeslust Competence Center, Schwarzachstraße 25, 94518 Spiegelau

**Winners Prices:** Prices / trophies for the top three finishers in each class

**Stake-out/**

**Parking area:** signposted areas at the Igelbus parking area, in front of the start and target area

**Registration:** [www.sog-events.de](http://www.sog-events.de)

**Overnight stay:** Tourism office Spiegelau, Konrad-Wilsdorf-Straße 1, 94518 Spiegelau  
fon +49 8553 9600 17; Email: [info@spiegelau.de](mailto:info@spiegelau.de)

**The following pet friendly hotels / inns and Co. offer all " DOGtoberfest guests " 10% off the room rate :**

Landhotel Tannenhof, Auf der List 27, 94518 Spiegelau  
fon +49(0)8553 / 973-0; email: [info@landhotel-tannenhof.de](mailto:info@landhotel-tannenhof.de)

Hotel Postwirt, Rosenau 48, 94481 Grafenau  
fon +49(0)8552/96450; email: [info@hotel-postwirt.de](mailto:info@hotel-postwirt.de)

Camping at the Nationalpark, Bergstraße 44, 94518 Klingenbrunn/Spiegelau  
fon +49(0)8553/727; email: [info@camping-nationalpark.de](mailto:info@camping-nationalpark.de)

Guesthouse Falkenau, Godehardstr. 18, 94258 Frauenau  
fon +49 (0)9926/1809994  
[info@urlaub-mit-hund-bayern.de](mailto:info@urlaub-mit-hund-bayern.de)

Grashöfle, Klosterfilzweg 24, 94568 St. Oswald  
fon +49(0)8552/692; email: [grashoefle@t-online.de](mailto:grashoefle@t-online.de)

**Contact:**

Fleischeslust Competence Center Spiegelau, Kinga Seiche,  
fon +49 8553 9788817, Email: [academy@fleischeslust-tiernahrung.com](mailto:academy@fleischeslust-tiernahrung.com)